



SEED COMPANIES AND LISTINGS

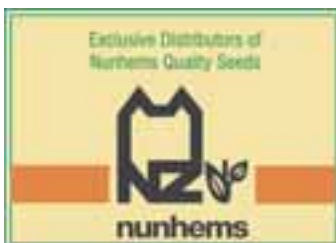
QUALITY SEEDS FROM LEADING SUPPLIERS



ACE SEEDS



SUNLAND SEEDS



JARIT



ACE SEEDS

After 3 years of solid development Ace Seeds continue to grow as a significant supplier of flower and herb seeds to the commercial growers, as well as Vegetable Seed, Flower seeds and Herb seeds to the commercial nursery sector

Ace Seeds is currently sourcing from over 25 leading seed suppliers both internationally and domestically based.

With a heritage of over 60 years supplying seed to commercial growers no other Australian seed supplier has the range of suppliers available to them. This wide access enables Ace Seeds to be a true one stop seed supplier.

With the range of exclusive product continually growing Ace Seeds staff continue to visit both domestic and international trials to ensure our grower customers are getting access to the latest varietal and cultural developments.

As well as supplying seed for sowing Ace Seeds also has access at very competitive rates to plugs and young plants of a wide range of crops from co-operator, commercial, young plant suppliers. We also exclusively represent the Livyn Seed taping system to the commercial flower sector.

The supply of seed for your crop does not start and finish with the sale, information of production techniques and varietal selection is almost as important as the quality of the seed itself, and, in this regard the team at Ace Ohlsson are without peer.

Ace seeds also supervises several seed production crop for both local and international sales.

Any grower wanting to ensure they have the best varieties (in what ever form) working for them, should ensure they contact the team at Ace Seeds



ACE OHLSSON

ACE SEEDS

Specialist supplier of
Cut flower seeds.

Bedding plant flower seeds
and vegetable Seeds.

Herb Seeds, Culinary and
Medicinal.

Sourcing seeds from more than a dozen breeders and seed producers from around the world. Ace Seeds continues the commitment to access the leading varieties at competitive prices while providing the customers with important cultural information to allow growers to get the best from these varieties.

Contact Ace Ohlsson for further
information or an up to date product list.

Email darryl@ceohlsson.com.au

Phone (02) 4661

Fax (02) 4615

Member



Australian Seed Federation



Bejo Seeds

- Vegetable seeds for professionals -

- Variety highlights -

Cauliflower

Skywalker F1

Meridot F1

Panther F1 (green)

Cabbage

Ducati F1 *NEW!*

Matsumo F1

Megaton F1

Manoko F1 (Chinese)

Bilko F1 (Chinese)

Nikko F1 (Chinese)

Cairo F1 (red)

Primero F1 (red)

Melissa F1 (savoy)

Famosa F1 (savoy)

Broccoli

Belstar F1

Fiesta F1

Batavia F1 *NEW!*

Red Beet

Action F1

Pablo F1

Boro F1

Taunus F1* *NEW!*

*(cylindrical)

Celery

Tango

Murcia

Parsley

Petra (curled)

Rialto (plain)

Fennel

Victorio F1

Orbit F1 *NEW!*

Rondo F1

Carrots

Mokum F1 (bunch)

Niagara F1

Nirim F1 *NEW!*

Parmex (golf ball)

Sweetheart (bunch)

(English) Spinach

Regiment F1

Rembrandt F1

Endive

Rhodos

Davos

Cornsalad

Masse

Chicory Catalogna

Punto *NEW!*

Onions

Descanso F1

Delgado F1

Peso F1 *NEW!*

Redwing F1 (red)

Electric (red)

Red Bull F1 (red) *NEW!*

Iceman F1 (white) *NEW!*

Leeks

Ginka

Columbus

Lancia

(Seed) Shallots

Ambition F1

Conservor F1 *NEW!*

Picador F1

Prisma F1

Radish

Reggae

Radicchio Rosso

Beacon

Caspio *NEW!*

Indigo

Leonardo

Fiero (treviso)

- Bejo, a name that stands for quality -

For more information, please contact:

Bejo Seeds Pty Ltd., PO Box 5627, Cranbourne, Victoria 3977.

Ph: (03) 9782 2811 - Fax: (03) 9782 2445 - Email: info@bejo.com.au

Website: www.bejo.com.au



*Proud supplier to
Ace Ohlsson
of quality vegetable
seed including:*



- Nunhems fancy lettuce for hydroponics including Bughatti, Bergamo, Green Sun, Bartoli, Solsun, Basic and new Nasonova resistant lines
- Australian bred, high yielding:
 - Corinth cabbage
 - Grevillea broccoli
 - Omeo cauliflower
- High yielding Hulk cos lettuce for spring and summer production
- Barcelona Nasonovia resistant iceberg lettuce for late autumn to spring production
- Nunhems Lebanese cucumbers, leeks, carrots and onions

For more information on the Henderson Seeds range contact Sam Bush on 0408 509063
Now known as Henderson - Claus Seeds

JARIT



Specialist Vegetable Seed Wholesalers

SUPPLYING THE FOLLOWING HIGH QUALITY VARIETIES TO THE VEGETABLE INDUSTRY

ONIONS & BUNCHING/SPRING ONIONS:

Extra Early Lockyer White - Early Lockyer White - White Shine - Gladalan White - S.A White Globe

SEEDLESS WATERMELON:

Nightshade - Cutwell - Classic - Golden Dream

WATERMELON: Blooming Brilliant

HONEYDEW: Ivory Pearl - Ivory Star

ROCKMELON: Rock N Roll - Sweet Salmon - Sweetheart - Sweetlife

PUMPKIN: Sweet Slice - Gunsynd - Carbine

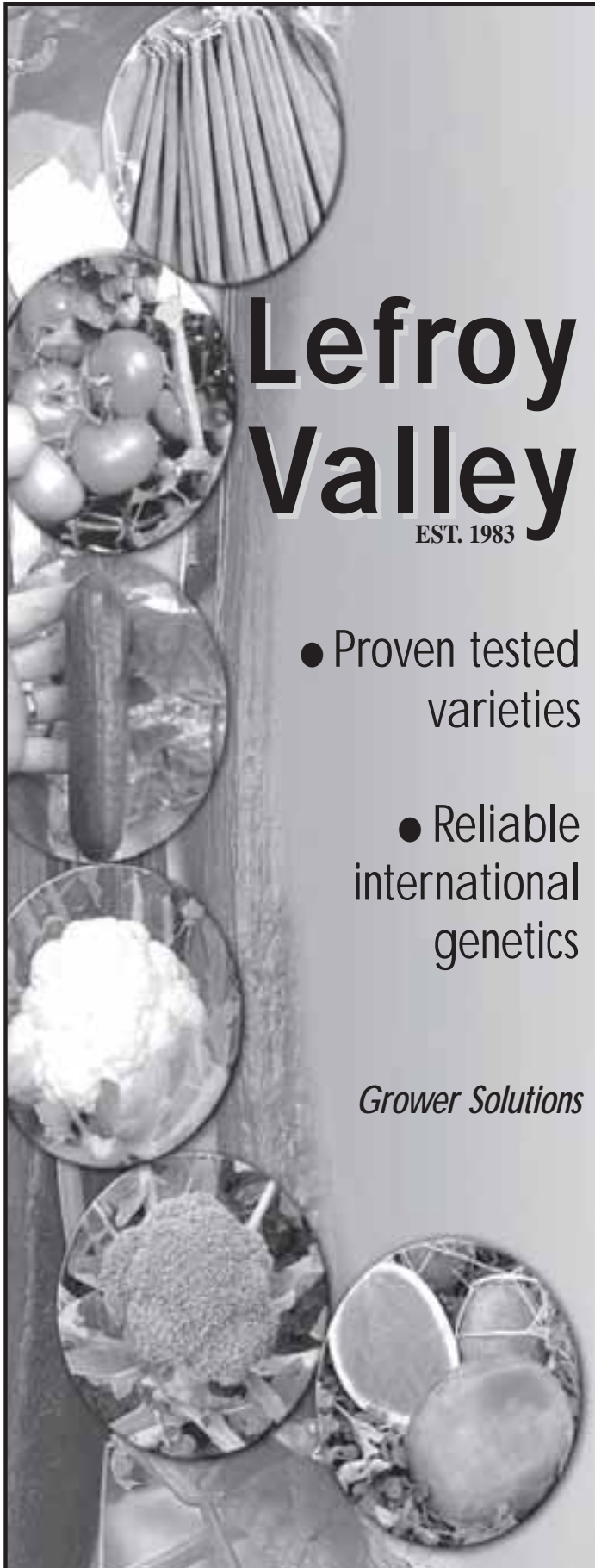
SWEETCORN: Crackerjack (JTS 212)

CARROT & BUNCHING/DUTCH CARROTS:

Orange Fire - JTC 365 & 362 - Honeybunch

FOR ORDERS AND FURTHER ENQUIRIES PLEASE CONTACT THE STAFF OF ACE OHLSSON ON (02) 9746 9659
OR THE FOLLOWING JARIT (Aust.) Pty Ltd NUMBERS:-
Jamie Roylance: 0419 460 922 - Head Office: (02) 4321 0111

“Patience, Persistence, Professionalism, Pay Off.”



Lefroy Valley

EST. 1983

- Proven tested varieties
- Reliable international genetics

Grower Solutions



VIC/NSW/TAS	WA/NT/S.	QLD
Ph: 03 8770 6666	Ph: 08 9409 5400	Ph: 07 4635 2099
Fax: 03 9786 8500	Fax: 08 9409 5401	Fax: 07 4635 2138

www.lefroyvalley.com

Effective.
Selective.
Protective.
Acramite®



Acramite® Miticide controls European Red mites, Two Spotted mites and Bryobia mites.

Acramite has a unique mode of action. It is highly selective, offers superior performance and rapid knock-down of target mite species.

It is an ideal Integrated Pest Management tool with minimal impact on beneficial insects and mites.

Acramite continues to protect your pome and stone fruit trees long after spraying to wipe out nymphs and late hatchers.

With Codex MRL's and a short withholding period you can get your crop to market without delay.

Acramite has the runs on the board and mites on the run. So don't give the mites a chance! Spray early this season and get Acramite working for you.



Acramite
MITICIDE

Control the Right Mites, Right Now.

* Acramite is a registered trademark.

Chemtura Australia Pty Ltd CHA5298



Seminis Vegetable Seeds is the largest developer, grower and marketer of fruit and vegetable seeds in the world. Offering growers from 150 countries more than 4000 distinct seed varieties, Seminis has been supplying its products to the Australian grower market for over 20 years.

The following is a short list of the main products we have been supplying the Australian market along with some new and improved material from Seminis breeding.

Broccoli:

IRONMAN – Versatile for cool, mild and warm periods.

OVATION – Late spring, summer and autumn harvest in cool and mild areas.

HERITAGE (Formerly evergreen) – shoulder variety, heavy head

Cauliflower:

CHARLOTTE – Early and regular-maturing Fremont-type. Best suited for warmer production areas.

DISCOVERY – Mid maturity variety suited to summer and autumn harvest in cool areas.

MOBY – Good heat tolerance and curd cover for summer and early autumn in mild areas.

DONNER – Best suited for late autumn and spring harvesting in cool areas while in milder areas can be harvested in winter.

AMIATA (formerly known as Pillar). – New introduction to the winter harvest, earlier than varieties in its slot. Excellent cover and heavy curd with good vigour.

Capsicum:

WARLOCK – Recommended for warmer season production areas.

TYCOON – Excellent yielding capacity for warm season production areas.

ARIES – Adaptable to a wide range of growing conditions.

Sweet Corn:

BASIN – With full season maturity, it has shown high yield potential and resistance to some races of the Common Corn rust.

OBSESSION – A bicolor with excellent shipping ability, with approximately 80 days to maturity.

PASSION – High quality yellow, tight husk with excellent packaging and shipping ability.

Lettuce:

RAIDER – Best suited to late autumn harvest in warmer areas

CONSTANZA – Nas aphid resistant, harvest in shoulder period. Big head with good inner texture.

FREEDOM – Nas aphid resistant, blond oak leaf. Suitable for spring/summer/autumn harvest

VULCANIA – Nas aphid resistant, triple red oak. Best suited for summer/autumn/winter harvest.

Zucchini:

CONGO – One of Seminis's own breeding, it has become a market leader, producing very dark green fruits of 15-18cm in length. The plant is very open and easy to harvest.

MARTINA – Becoming a market standard in the NSW Lebanese market, produce a vigorous bush with high yields. The tapered fruit is pale green with tidy blossom ends.

NOAH – An improved Martina with high tolerance to PM and good resistance to mosaic viruses (TMV, WMV)

Melons:

PACINO – "Nightshade" / "Shadow" rind colour, excellent internal with good holding ability. Good tolerance to hollowing and sunburn.

ELOURA – A "Red Back" rind variety, with deep red crisp flesh and consistent high yields.

COMPANION- A specialist pollinator for seedless melon production.

These and many other Seminis varieties are available from Ace Ohlsson

For further information please contact:

CHRISTOPHER AZZI NSW TERRITORY MANAGER 0407 532 227

South Pacific Seeds – Vegetable Seed Varieties for the Commercial Vegetable Grower



South Pacific Seeds is proud to be a major vegetable seed supplier to our main field distributor in the greater Sydney area - Ace Olsson's. South Pacific Seeds offers a large range of varieties to help commercial growers fill their planting programs.

Highlights of the South Pacific Seeds range of vegetable seeds include:

Beetroot Orbit – Mid Maturing hybrid globe shaped beet with strong erect tops making it well suited for bunching.

Cabbage Kameron – large sized cabbage for cool season production with flattened globe shape head and excellent holding ability.

Capsicum Aquarius - is a green to red half long capsicum for sowing alongside Aries. Straight smooth glossy walls with good tolerance to purpling. Intermediate resistance to BST123.

Capsicum Santino – This new release capsicum produces large blocky fruit with flat shoulders and smooth thick walls. Santino is suggested for sowing alongside Warlock in non Bacterial Spot regions.

Carrot Stefano - A versatile, smooth, slightly tapered Nantes carrot.

Lettuce Silverado – this shiny leaved dark green crisp head lettuce has a flat butt and resistance to Downy Mildew races 1-16.

Lettuce Asteroid – Slow bolting pale green oakleaf lettuce with good size and shape and good bolting tolerance. Excellent performance in hydroponic production for year round sowing with resistance to Downy Mildew B1 1-17, 21, 23.

Lettuce Diva – is a large sized, medium green for harvest in Autumn – early winter, spring - early summer. Downy Mildew resistance 1-25

Lettuce Foxtrot Nr – is a Nasonovia Aphid resistant variety in the Casino time slot. Large frame with good tipburn and bolting tolerance, Recommended for summer harvest (Sydney area). Resistance to Nasonovia Aphid and Downy Mildew B1 1-25.

Lettuce Garland Nr – dark green oakleaf lettuce with intermediate resistance to Nasonovia Aphid. Suitable for year round use.

Lettuce Echo – dark glossy mignonette lettuce with ability for year round harvest. Echo is very slow to bolt and has good tipburn tolerance, Downy Mildew resistance 1-25.

Lettuce Ember – Red mignonette type lettuce that is an improvement over the standard lines with darker and firmer leaves. Can be grown all year round and offers resistance to Downy Mildew B1 1-16, 21, 23.

Lettuce Cos Regal – Large framed cos lettuce with glossy dark green leaves and nice square butt. Very uniform and versatile with resistance to Downy Mildew B1 1-16, 21, 23.

Lettuce Shrek Nr – Cos Regal type lettuce with intermediate resistance to Nasonovia Aphid and resistance to Downy Mildew B1 1-17, 21, 23. Suitable for year round production of medium to large framed cos type lettuces.

Parsley Grande (Italian Plainleaf) – SPS now offers a superior strain with extra large leaves produced on a vigorous plant suited to all year round production.

Pumpkin Kens Special Hybrid – This Jap type pumpkin offers an excellent eating pumpkin that can mature up to 3 weeks earlier than the open pollinated (OP) Kens Special. Potential for up to 25% increase on a crop of the OP strain.

Watermelon Redback – Medium sized oval melon for main season production. Medium dark green stripe with narrow indistinct dark stripe.

Watermelon Silhouette – Red fleshed seedless watermelon producing 10-12 kg oblong shaped fruit with solid crisp fresh and a mid green skin.

Zucchini Columbia – New generation Lebanese Zucchini producing fruit similar to Martina and Clarita on an upright open plant. Columbia offers intermediate resistant to ZYMV and WMV2.

Zucchini Hummer – Long slender dark green fruit with a very shiny appearance produced on easy to harvest, strong open plants with fewer spines resulting in less fruit scratching. Intermediate resistance to ZYMV, WMV2 and PRSV

Zucchini Stinger – Dark green blocky shaped zucchini with glossy appearance. Features a compact plant with a quite open habit offering intermediate resistance to ZYMV, WMV2 and PRSV.

For further details on these and other South Pacific Seeds varieties please contact Ace Olsson's or South Pacific Seeds Technical Sales Representative Carlos Azzi on mobile 0418 674 471 or by phoning 02 6962 7333.

Syngenta Seeds Pty Ltd

Syngenta Seeds is part of Syngenta, a leader in the agribusiness industry across all major areas of Crop Protection and seeds. Syngenta commands strong worldwide market positions and is one of the leading seed companies in the world, ranking among the top three companies in the high value commercial seed market.

In the vegetable seeds business, Syngenta has more than 135 years of experience and expertise across a broad range of crops.

Syngenta Seeds are proud to work with Ace Ohlsson to provide growers with world class genetics backed up with local expertise.

Syngenta Seeds have a strong tradition of supplying quality products, especially;

- Sweetcorn
- Zucchini
- Lettuce
- Melon
- Cauliflower
- Tomato
- Cucumber



Dependable, innovative products

Syngenta seed brands are so well respected because the products are dependably high in quality and often offer significant improvements in growing traits such as resistance to disease and pests as well as nutrition and flavour.

Syngenta breeders conduct thousands of trials each year to learn which varieties best meet customer needs, with many trials actually taking place in customer's fields. Our seed production and operation staff takes great pride in making sure that the seeds maintain their high quality after they're harvested, through processing, storage and shipping.

Our global presence and strong Research and Development pipeline of new products provide a basis for future growth.

Growth starts with vision. That is what we believe at Syngenta.



**For further information, please contact
your local Representative or
Syngenta Seeds / S&G Brand on (03) 9706 3033**

THINKING VEGETABLE SEEDS THINK



Cabbage Savanna	Semi-savoy type. Suited to cool mild climate.
Cauli Ambassador	A robust erect plant suited to June / July harvest in temperate areas. Snow white, deep solid heavy heads. Protective upright frame. Excellent curd protection
Cauliflower Nova	Early maturing heat tolerant CMS variety. Australian bred for production in warmer climates. Curd is well wrapped & deeply tucked. Very adaptable variety.
Chinese Cabbage Apache	Intermediate resistance to bacterial soft rot, downy mildew and club root. Has a vigorous and uniform plant which is slow bolting. Apache is ideally suited for Spring and early Summer production.
Lettuce Sentry	Excellent vigour, flat butt. Highly suitable for processing due to internal colour and yield potential. Has excellent shelf life after harvest. Maintains white butt appearance.
Lettuce Outback Cos	Bulky Cos in the Verdi style. Corky Root resistant.
Lettuce Saxon Cos	Attractive, upright plants with good heading capability for cool weather production. Lobjoits type but quicker maturing. Suitable for fresh market or processing.
Spring Onion Tiara	Specialty Spring onion. Slim long stems with thin necks. Uniform white bulbs.
Silverbeet Success	Dark green savoyed leaves on short plant with white stems. Good for whole plant harvesting.
Watermelon Seedless Kryptonite	Attractive dark green stripe on a medium-light green background. Flesh is very dense, resulting in a relatively heavy melon, intense red with an excellent "watermelon flavour", as well as being sweet.
Watermelon Safari	Hybrid all sweet type with good external and internal characteristics. Resists sunburn well and is an excellent pollinator for triploids (seedless). The vine is quite robust.
Watermelon Kruger	Blocky All Sweet type with good yield potential. Excellent internal colour and cuts very well. Externally it has less of the light green striping giving an overall darker appearance. Useful Fusarium and Anthracnose resistance.

**For further information on the complete Terranova Seeds range contact
Charlie Vella on 0419286370**

**Visit the website at www.tnseeds.com or get the product CD
from Ace Ohlsson**

SEED LISTINGS

BEANS, BROAD BEANS & PEAS

Most varieties listed below are weighed out & sold per kg as well as in bag lots.

Product	Description	Sizes
Beans, Blue Lake (Climbing)	climbing s/less, 1.8m plant	kg, 25kg
Beans, New Pioneer	flat stringless	kg, 25kg
Beans, Simba PBR	round stringless, dark colour	kg, 25kg
Beans, Trida	high yielding flat stringless	kg, 25kg
Beans, Windsor Long Pod	flat string bean, old standard	kg
Borlotti Beans Bush	40-60cm high bush	kg, 25kg
Borlotti Beans Tall (Climbing)	1.5-1.8m tall habit	kg
Butter Beans, Goldrush	round stringless butter, 14cm pod	kg, 25kg
Broad Beans, Morocco	early, purple seeded, long pod	kg, 25kg
Broad Beans, Tripoli	mid season, brown seeded, long pod	kg, 25kg
Italian Flat Bean, Polo	stringless continental, bean 17cm, plant 160cm	500 seeds
Peas, Bounty (Bush)	std bush type, 60-75cm high plant	kg, 25kg
Peas, Greenfeast (Bush)	plants 75cm, pods 11cm	kg, 25kg
Peas, Massey Gem (Bush)	plants 40-50cm, pods 9cm, popular	kg, 25kg
Peas, Alderman (Climbing)	plants 2m, pods 12-13cm	kg, 25kg
Snow Pea, Oregon Giant	plants 1m tall, good PM resistance	kg, 25kg
Snow Pea Snowman	11 x 2.5cm pods, flat appearance	kg, 15kg
Sugar Snap Pea	high yielding, compact bush 50cm	kg, 25kg

HERB SEED

Product	Description	Sizes
Basil Genova Strain	Ocimum basilicum	gram
Basil Thai Siam Queen	Ocimum basilicum citriodorum	gram
Chervil Common	Anthriscus cerefolium	gram
Chives	Allium schoenoprasum	gram
Chives Garlic	Allium tuberosum	gram
Coriander Slo-Bolt	Coriandrum sativum	gram
Cress	Lepidium sativum	gram
Dill	Anethum graveolens	gram
Fennel	Foeniculum vulgare	gram
Garlic Seed (bulbs only)	Allium sativum	gram/kg
Marjoram Sweet	Origanum majorana	gram
Mint Curled	Mentha labiatae	gram
Mint Pepper	Mentha piperita	gram
Mint Spear	Mentha spicata viridis	gram
Mustard	Brassica alba	gram
Oregano	Origanum vulgare	gram
Parsley Curled	Petroselinum crispum	gram
Parsley Italian Plainleaf	Petroselinum crispum var. neapolitanum	gram
Rocket	Eruca sativa	gram
Sage	Salvia officinalis	gram
Sorrel	Rumex acetosa	gram
Summer Savory	Satureja hortensis	gram
Thyme Winter	Thymus vulgaris	gram
Water Cress	Nasturtium officinale	gram

NOTE;- Full range of Chilli seed available.

FORAGE CROPS & PASTURES

See also Green Manure Crops

Most products listed below are sold in kg or bag lots (generally 20-25kg).

Cultivar	Variety	Cultivar	Variety
Blends	Custom Blends-made to order	Phalaris	Australian
	Horse Mix		Holdfast
	Instant Graze		Sirolan
Brassicas	Hunter Forage Brassica		Sirosa
	Rangi Rape		Uneta
	Swede, Champion P/T	Ryegrass	Concord (Italian)
Clover- Red	Montgomery		Crusader (Italian)
	N Z Cowgrass		Dargle (annual)
Clover- Sub	Clare		Dobson (perennial)
	Dalkeith		Ellett (perennial)
	Denmark		Grasslands Nui (perennial)
	Gosse		Kangaroo Valley (perennial)
	Goulburn		Tetila (annual)
	Junee		Vedette (perennial)
	Karridale		Victorian (perennial)
	Seaton Park		Wimmera (annual)
	Trikkala		Yatsyn 1 (perennial)
	Woogenellup	Sundry/Grasses	Desmodium
Clover- White	Aran		Kikuyu
	Haifa		Maku Lotus
	Kopu		Massey Basyn
	N.Z. Huia		Matua Prairie
	Prop		Paspalum
Cocksfoot	Cambria		Puccinellia
	Currie		Native Grasses
	Porto		Rhodes Grass
	Wana		Setaria
Forage Grasses	Forage Millet		Tall Wheat
	Superdan 2- sudan hyb.		Veldt Grass
	Supergraze- sorghum hyb.	Tall Fescue	Advance
	Sweet Jumbo- sorghum/sudan hyb.		Cajun
Grass Herbs	Chicory		Demeter
	Plantain		Dovey

LUCERNE, MEDICS & LEGUMES

Products below are sold per kg or 25kg bag lots.

Lucerne	Variety	Medic	Variety
	Aurora		Parragio
	CUF 101		Sava
	Eureka		Sephi
	Hunter River	Sundry Legumes	Balansa Glover
	Hunterfield		Berseem Clover
	Pioneer L55		Crimson Clover
	Pioneer L69 (winter active)		Maku Lotus
	Prime		Rongai Lablab
	Sceptre		Shaftal Persian
	Sprouting		Strawberry Clover
	Trifecta		Chickpeas

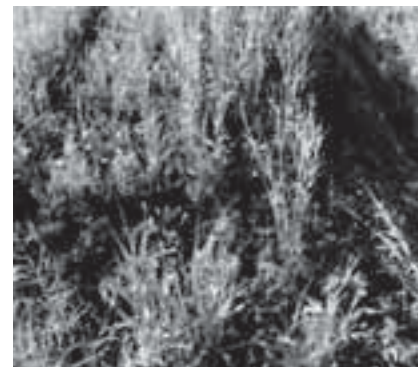
NOTE:- Lime Pelleting and Inoculation is recommended for all legume seed to ensure proper nitrogen fixing nodulation.

MANURE CROPS - GREEN FODDER

SEE ALSO FORAGE CROPS & PASTURES, AS WELL AS LEGUMES.

Most products listed below are sold in kg or bag lots (generally 20-25kg).

Ace Green Crop Summer Blend (Lupins, Mustard Millet, Oats, Vetch)
Ace Green Crop Winter Blend (Lupins, Mustard
Oats, Ryecorn, Vetch)
Chick Peas
Cow Peas
Dunn Field Peas
Forage Sorghum- Sweet Jumbo
Japanese Millet
Lupins
Mustard, Nemclear
Oats, Coolabah
Oats, Dover
Oats, Saia
Ryecorn (cereal rye)
Vetch



A green manure crop of ryecorn and vetch helps improve the soil on a vegetable block.

Benefits of Green Manure Crops

- * Increase organic matter, earthworms and beneficial micro-organisms.
- * Increase the soil's available nitrogen (particularly legumes) and moisture retention, while assisting in reducing nutrients leaching.
- * Stabilises the soil- less erosion.
- * Assists in bringing deep minerals to the surface & breaking up claypans.
- * Encourages beneficial insects.
- * Improves water, root and air penetration in the soil.
- * Smothers weeds
- * Can disrupt pest and disease cycles.
- * Some green manure crops e.g. Mustard, can have an anti- nematode effect.

Seed for leguminous green manure crops such as cow peas, clovers, medics and vetch should be inoculated with Rhizobium bacteria before sowing. This helps the crop establish good levels of root nodulation and nitrogen fixation. This is a small additional cost and can be organised by Ace staff prior to the seed being delivered.

The biggest downside to growing green manure crops is that they do not provide the grower with an immediate cash income, though the long term benefits are evident.

It is important that flowering crops should be dug-in just before flowering and cereals before producing grain heads, this is to ensure against undesirable seed banks from forming. Crops will decompose in 4 - 6 weeks in the warmer months, but may take longer in Winter.

Planting Season (guide only)

Summer:	Ace Summer Blend, Barley, Cow Pea, Italian Ryegrass, Japanese Millet, Mustard, Sorghum.
Autumn:	Ace Winter Blend, Canola, Faba Bean, Field Pea, Italian Ryegrass, Lupin, Oats, Rye Corn, Sub Clover, Vetch
Winter:	Ace Winter Blend, Canola, Faba Beans, Field Pea, Italian Ryegrass, Oats.
Spring:	Ace Summer Blend, Canola, Field Pea, Italian Ryegrass, Japanese Millet, Legumes, Lupin, Mustard, Sorghum, Vetch.

SWEETCORN VARIETIES

New Sweetcorn varieties have provided growers with a wider range of options than previously available.

MAX has proven to be a very good variety, featuring excellent seedling vigour for early establishment and strong plant growth providing cover for the large cobs produced.

SENTINEL is a high quality sister line to Max, with superb eating quality and offering a high level of disease resistance for later in the season when traditionally growers have had to opt for varieties with lesser eating quality. True 2 cob per plant potential.

GOLDEN SWEET IMPROVED is a variety that demonstrates superior kernel colour, good plant habit and vigour, ideally suited to mid season production.

Bicolour varieties such as **SAMURAI** and **MADONNA** offer what can only be described as first-rate eating quality that is seeing market demand increasing every year. Growers should be aware of the need to exclude pollen from SE and maize type corns or reduced quality may result.

Most Sweetcorn varieties are sold by the kilo or in bag lots of generally 15kg.

Ace Ohlsson have spent considerable time and effort working with the breeders to ensure growers are kept up to date with the latest Sweetcorn varieties.

TURF & LAWN GRASSES

Products below are sold per kg or bag lots

Chewings Fescue	Red Creeping Fescue
Cindy Creeping Red Fescue	Roadside Renno Mix
Cobra Bentgrass	Sabre Bluegrass
Dichondra Repens	Sahara Couch
Fineleaf Ryegrass	Shortstop Tall Fescue
Gator Fineleaf Rye	Spartan Hard Fescue
Highland Bentgrass	Sun & Shade Blend
Hulled Couchgrass	Top Hat Fineleaf Ryegrass
Kentucky Bluegrass	Turf Type Fescue
NZ. Browntop Bentgrass	Turf Type Ryegrass
Parkland Mix	Unhulled Couchgrass
Penncross Bentgrass	Victorian Creeping Bent

“Top quality stock comes from using
top quality products”

SCOTTS RANGE AVAILABLE NOW FROM ACE OHLSSON

Agroblen [®]	A base controlled release fertiliser for soil grown crops such as vegetable, fruit and cut flower crops.
Osmocote [®] Exact [®]	Exact Release. Exact Performance. Your choice without compromise.

Plant Protection Range under the Scotts Umbrella

Rout [®]	The most cost effective pre-emergent herbicide on the market.
Banrot [®]	Proven disease protection for root and stem rot soil pathogens.
Procide [®]	Fast knockdown and preventative treatment against insect and mite pests.
Crown [®]	Systemic insecticide for fast, effective control of sucking pests and fungus gnat.
Zyban [®]	Dual action systemic and contact fungicide for foliar fungal disease.



For more information contact Scotts direct Freecall 1800 789 338
www.scottsaustralia.com or contact Ace Ohlsson on 02 9746 6640

TERMS & CONDITIONS

- **ADVICE & LIABILITY**

- while advice may be provided in good faith, customers should always be guided by the information contained within registered product labels and other legal documents.

- **CLAIMS**

- will not be recognised unless we are notified within 7 days of purchase.

- **DAMAGE/LOSS LIABILITY**

- orders are accepted without transport responsibility in relation to damage or loss.

- **DEPOSITS**

- all drum, fertiliser bulka bag and shuttle deposits will be charged at cost, at the time of supply and later refunded upon return in clean condition and within the allotted time frame offered by the supplier.

- **drumMUSTER**

- drumMUSTER levy of \$0.04/kg or L will be charged where applicable.

- **FREIGHT**

- will be invoiced where appropriate.

- **MINIMUM ORDERS**

- we reserve the right to refuse orders if below economic viability.

- **PALLETS**

- must be exchanged at the point of supply (i.e. collection or delivery) or will be invoiced and refunded if returned later.

- **PRICES**

- will be charged as at time of delivery. Prices are subject to variations without notice.

- **RETURNS**

- only accepted if i) agreed to by Ace Ohlsson Pty Ltd ii) within 10 days of dispatch iii) returned in a saleable condition iv) a 10% restocking fee may apply if an error on our behalf has not occurred. Goods ordered in specially for customers will not be accepted for return.

- **SEED LIABILITY**

- liability will only be to the extent offered by the individual seed companies.

- **TERMS**

- strictly net 30 days to approved customers or otherwise on a cash sale basis. Service fees will be levied on any overdue accounts. Goods sold will remain the property of Ace Ohlsson Pty Ltd till paid for in full.

Thank you

A big thank you to the sponsors of the manual. Similarly, thank you to the individuals and companies that contributed editorial content.

Thank you to Executive Press (the printer) and Innovative Response (the designer), for their invaluable assistance.

Special thanks to June, who showed great patience with her husband when his sadly lacking computer skills needed her willing support.

Frank Ryan